

JINGONG 晋工

Profile of JINGONG



1. Company Profile



Fujian Jingong Machinery Co., Ltd. —JINJIANG HEADQUARTER

- 1) Year of foundation: 1979
- 2) Employees: 1126
- 3) Agents: > 80 agents at China market and abroad market
- 4) After-sales service centers: > 400
- 5) Production capacity: 20,000 loaders and 5,000 excavators / yearly
- 6) Location: Anhui Industrial Park, Jinjiang City



1. Company Profile



Jiangsu Jingong Machinery Co., Ltd.——Jiangsu BRANCH

- 1) **Year of foundation** : 2016 (The northern base project of JINGONG)
- 2) **Land area**: 450 acres (300,000m²)
- 3) **Production capacity**: 15,000 loaders, forklift loaders and excavators, , mainly radiate to the northern market.
- 4) **Location**: Dantu District, Zhenjiang City, Jiangsu Province.



1. Company Profile Jingong Machinery



- **The largest stone forklift loader (Block Handler) manufacturing of China**
- **Top 5 loader brands of China**
- **The leading brand of China wheel excavators**



1. Company Profile Manufacturing Base



Production Lines

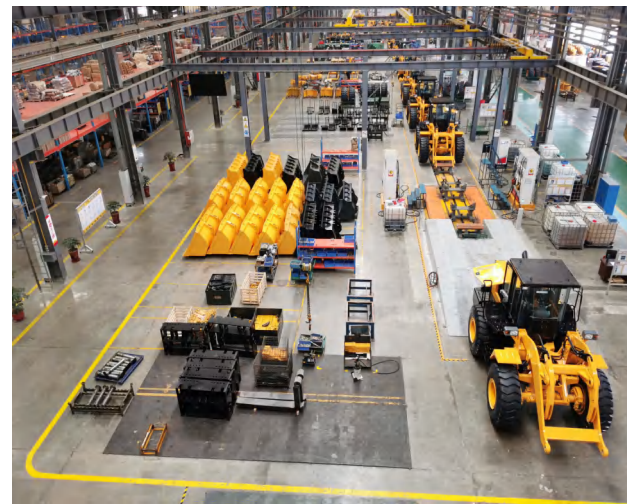
□ Drive axle production line



□ Gearbox production line



□ Main machine assembly line



1. Company Profile. Manufacturing Base

JINLONG 晋工

Advanced equipment

□ Test bench of intelligent transmission assembly



□ Original imported MAZAK CNC machining center



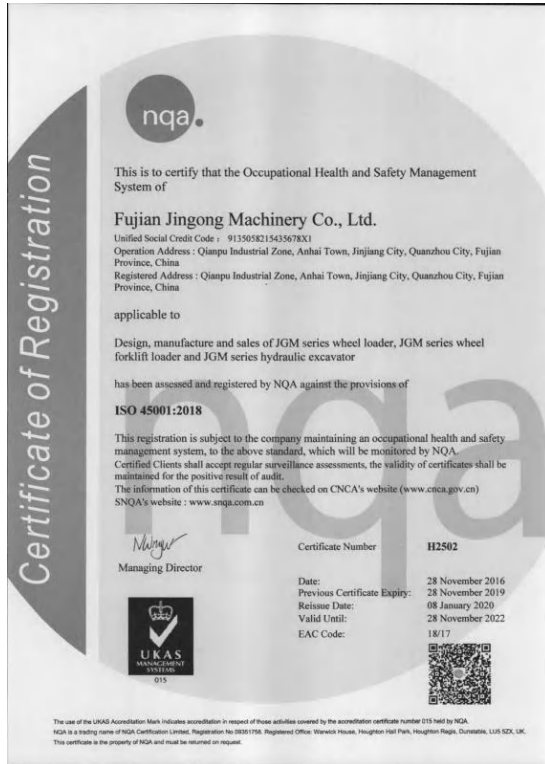
□ 3D coordinate instrument



2. Certificate & Honor

JINJONG 晋工

Certificate of Registration



Quality Management Systems



Certificate of Work Safety Standardization



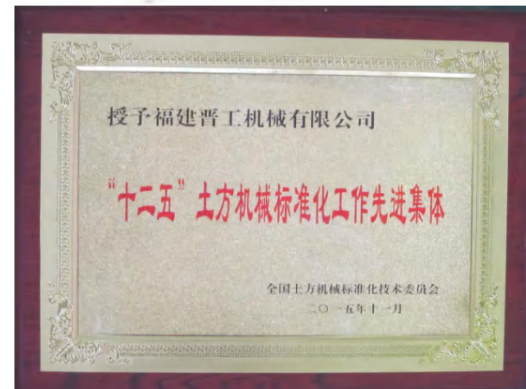
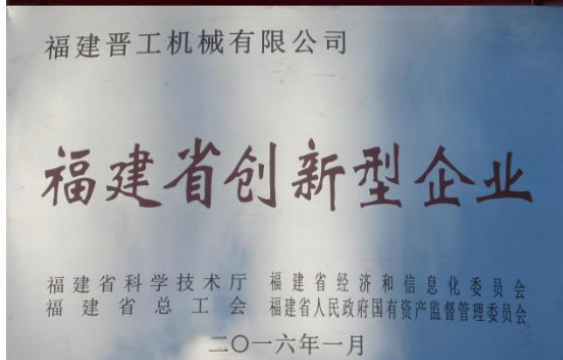
2. Certificate & Honor

JINLONG 晋工

Enterprise Credit Evaluation AAA



Certificate of High and New Tech Enterprise

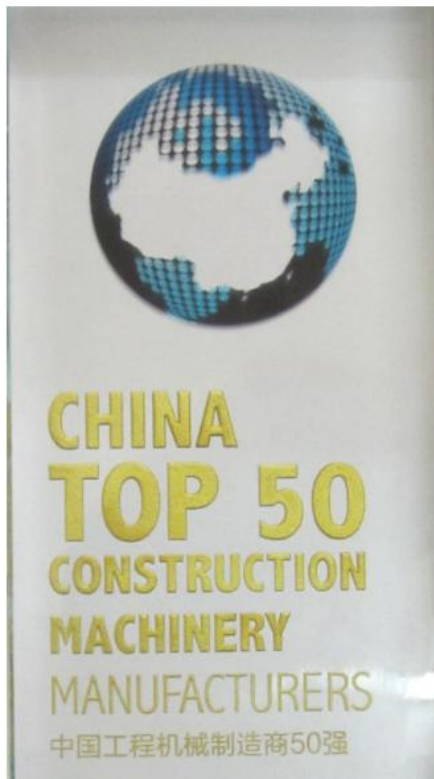


2. Certificate & Honor

JINLONG 晋工

CHINA TOP 50

Construction Machinery Manufacturers



CHINA TOP 30
Construction
Machinery
Manufactures



2. Certificate & Honor

JINLONG 晋工

TOP 10 CHINA Wheel Loader



TOP 50 Products



CHINA TOP 70 Industrial Brands





Signed a global strategic cooperation agreement with Hyundai

**Global cooperating
partner of
Hyundai(2018)**

**OEM & ODM
factory of
Hyundai**



**Global cooperating
partner of Hyundai**

**OEM factory
of Hyundai**

3.International Cooperation

JINLONG 晋工



**Global cooperating
partner of Hyundai**

**OEM factory
of Hyundai**

4. Product Series-More than hundred models

JINLONG 晋工



5. Introduction of **Block Handler**(Forklift Loader)

Block Handler(Forklift loader)

Domestic first, sales champion

JINZONG 晋工

**Block handler Forklift
loader with the World's
largest tonnage**

JGM791FT50KN



JGM771FT32K



JGM771FT42KN



JGM761FT28KV



JGM761FT26KN



JGM761FT21KN



JGM751FT18KV



JGM751FT16KN

5. Introduction of **Block Handler**(Forklift Loader)



Lifting Capacity: 16-50 ton
Lifting height: 3.2m

Block Handler(Forklift loader)

JINGONG can provide all kinds of attachment to customers :

Quick changing bucket

2. Fork

3. Steel Coil Ram

4. Pipe grapple

5. Tyre clamp changing heavy duty dumping truck

6. Container rotator, to handle the container

7. Customized attachments

That makes it multifunctional, efficient and reliable.

6. Block Handler(Forklift Loader) Applications

JIN[△]ONG 晋工



- Marble, stone quarry, to move and handle the block

6. Block Handler(Forklift Loader) Applications

JIN'ONG 晋工

handle the cement
twist king block



Optional: Equipping
with bucket



Working in steel factory,
to handle the steel plate.



To handle the steel coil,
Working in steel factory.



6. Block Handler(Forklift Loader) Applications

JINΔONG晋工

JGM781CR32KN is working in port, to handle the container, Container rotating Bulk material handling, power plant, steel plant, fertilizer plant, feed plant, grain warehouse, corn, soybean, wheat, sand, slag, coal, mineral powder, cement factory

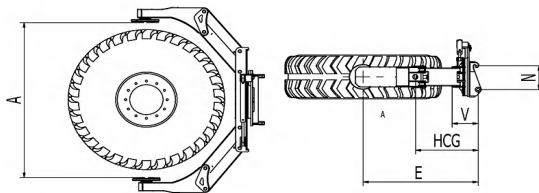


6. Block Handler(Forklift Loader) Applications



Heavy duty tyre clamp

Heavy duty tyre clamp, to replace and change the heavy-duty dump truck tyre and the large size wheel loader tyre.



tyre size

By Size

- ▶ 27.00R49
- ▶ 30.00R51
- ▶ 33.00R51
- ▶ 36.00R51
- ▶ 37.00R57
- ▶ 40.00R57
- ▶ 46/90R57
- ▶ 50/80R57
- ▶ 53/80R63
- ▶ 55/80R57
- ▶ 59/80R63

dump truck

By Vehicle

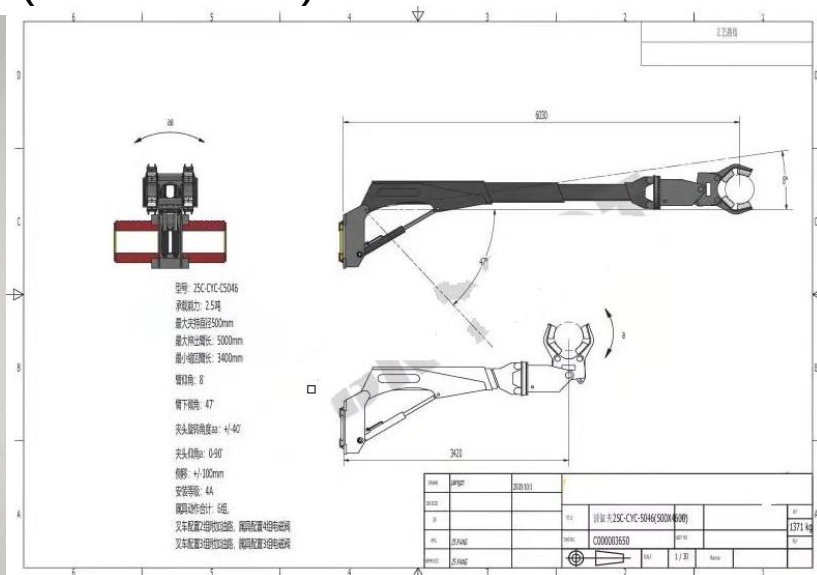
- ▶ CATERPILLAR
- ▶ BELAZ
- ▶ KOMATSU
- ▶ HITACHI
- ▶ LIEBHERR
- ▶ TEREX/Unit Rig
- ▶ More

6. Block Handler(Forklift Loader) Applications

Heavy duty cylinder clamp (tailor-made)



型号: 20C-BBF-2000
 承载能力: 2000kg
 臂长: 2500mm
 最大直径500mm
 下倾角20度
 上倾角90度
 侧移+/-100
 旋转: 360度
 失载距: 240mm
 载荷中心: 2500mm
 自重: 1400kg



Compact Wheel Loader	Rated Load < 1000 KG
Small Wheel Loader	Rated Load 1000 KG-2500KG
Midium Wheel Loader	Rated Load 3000 KG-6000KG
Large Wheel Loader	Rated Load > 6000 KG
Backhoe Loader	Operating weight 7400-8200KG
Skid-Steer Loader	Rated Load 700 KG-1200KG

8. Wheel Loader Product Series

JIN-ONG 晋工

Wheel loaders with hundred specifications and models, **Top-5 in the loader industry.**



2 Ton



3-4 Ton



5 Ton



5.5 Ton



6-7 Ton



8 Ton

8. Wheel Loader Product Series

JIN-ONG 晋工

Differentiated products

Mine-tunnel type



Explosion-proof type



Hoisting machine



**Wood-clamped type
(with opposite teeth,
staggered teeth and
combined teeth)**



Grass-clamped type



Lateral unloading machine



8. Small Wheel Loader Rated Load 1000 KG-2500KG

JINLONG 晋工

Rated Load
1000 KG

Rated Load
1200 KG

Rated Load
1800 KG

Rated Load
2000 KG

Rated Load
2500 KG

JGM612E

五十铃



JGM616E

小松



JGM618E

中松



JGM720KN



JGM620E



項目	JGM612E	單位
額定載重	1000	kg
铲斗容量	0.7	m ³
整机重量	3500	kg
卸料高度	3200	mm
卸料距离	900	mm
外形尺寸	长	5400
	宽	1700
	高	2720
斗宽	1700	mm
轴距	2125	mm
最小转弯半径(外/内)	3500	mm
发动机型号/额定功率	云内4D240kW	/
速度	20	km/h
最小离地间隙	300	mm
轮胎规格	16/70-16	/
轴距	1500	mm
轴距	1500	mm
轴距	1500	mm
轴距	1500	mm
轴距	1500	mm

項目	JGM616E	單位
額定載重	1200	kg
铲斗容量	0.9	m ³
整机重量	3934	kg
卸料高度	3200	mm
卸料距离	900	mm
外形尺寸	长	5750
	宽	1730
	高	2760
斗宽	1800	mm
轴距	2120	mm
最小转弯半径(外/内)	3500	mm
发动机型号/额定功率	云内4D240kW	/
速度	20	km/h
最小离地间隙	300	mm
轮胎规格	16/70-16	/
轴距	1500	mm
轴距	1500	mm
轴距	1500	mm
轴距	1500	mm
轴距	1500	mm

項目	JGM618E	單位
額定載重	1800	kg
铲斗容量	1	m ³
整机重量	5240	kg
卸料高度	3500	mm
卸料距离	1000	mm
外形尺寸	长	6200
	宽	2050
	高	3020
斗宽	2000	mm
轴距	2550	mm
最小转弯半径(外/内)	4500	mm
发动机型号/额定功率	云内4D240kW/27kW	/
速度	35	km/h
最小离地间隙	400	mm
轮胎规格	16/70-20	/
轴距	1570	mm
轴距	1570	mm
轴距	1570	mm
轴距	1570	mm
轴距	1570	mm

Item	JGM720KN	單位
Rated Load	2000	kg
Bucket Capacity	1.2	m ³
Operating Weight	6000	kg
Dump Height	2750	mm
Dump Distance	920	mm
Dimension	Length	6030
	Width	2060
	Height	2820
Bucket Width	2060	mm
Wheelbase	2436	mm
Min. Turning Radius	4750	mm
Engine	62.5kW	/
Speed	35	km/h
Min. ground clearance	300	mm
Type	16/70-24	/
Wheel Track	1500	mm
Axle	JINGONG	/
Torque Converter	280	/

項目	JGM620E	單位
額定載重	2500	kg
铲斗容量	1.2	m ³
整机重量	6400	kg
卸料高度	3500	mm
卸料距离	1000	mm
外形尺寸	长	6200
	宽	2100
	高	3100
斗宽	2200	mm
轴距	2600	mm
最小转弯半径(外/内)	5500	mm
发动机型号/额定功率	云内4D240kW/25kW	/
速度	35	km/h
最小离地间隙	400	mm
轮胎规格	16/70-24	/
轴距	1670	mm
轴距	1670	mm
轴距	1670	mm
轴距	1670	mm
轴距	1670	mm

8. Wheel Loader Product Series

JINLONG 晋工

Wheel Loader 3 ton



Wheel Loader
JINLONG 737K
Tier 2

Operating Weight:	10,300kg
Rated Load:	92kW(125hp)
Bucket Capacity:	1.7m ³

JINLONG 晋工

Operating weight: 10,300kg

Operating weight includes the work equipment stipulated by manufacturer, the unloaded attachments, driver (75kg), full-filled fuel tank, full-filled radiator, and all fluids (including the hydraulic oil, drive oil, engine oil, and engine coolant) added to the set level stipulated by manufacturer.

Bucket capacity: 1.3-2.5m³

Engine

Description

International famous brand Weichai WP6G125 engine with large torque reserve, stronger power and lower fuel consumption. Six cylinders, in-line, water-cooled, four-stroke, direct injection.

Emission grade	Tier 2
Manufacturer	Weichai
Model	WP6G125E23
Total power of engine (SAE J1995 / ISO 14396)	92kW(125hp) @2300rpm
Max. torque	500 N·m
Displacement	6.75L
Number of cylinders	6
Intake type	Turbocharger

Optional



8. Wheel Loader Product Series

JINLONG 晋工

Wheel Loader 3.5 ton



Operating weight:	11,500kg
--------------------------	----------

Operating weight includes the work equipment stipulated by manufacturer, the unloaded attachments, driver (75kg), full-filled fuel tank, full-filled radiator, and all fluids (including the hydraulic oil, drive oil, engine oil, and engine coolant) added to the set level stipulated by manufacturer.

Bucket capacity:	1.3-2.5m ³
-------------------------	-----------------------

Engine

Description

International famous brand Weichai WP6G140E22(DHB06G0046) engine with large torque reserve, stronger power and lower fuel consumption. Six cylinders, in-line, water-cooled, four-stroke, direct injection.

Emission grade	Tier 2
Manufacturer	Weichai
Model	WP6G140E22
Total power of engine (SAE J1995 / ISO 14396)	105kW(140hp) @2200rpm
Max. torque	560 N·m
Displacement	6.75L
Number of cylinders	6
Intake type	Turbocharger

Optional



8. Wheel Loader Product Series Wheel Loader 5 ton

JIN'ONG 晋工

Wheel Loader 5 ton JGM757K



Operating weight:	17,300kg
Rated Load:	162kW(220hp)
Bucket Capacity:	3.0m ³

JIN'ONG 晋工

Specifications

Operating weight: 17,300kg

Operating weight includes the work equipment stipulated by manufacturer, the unloaded attachments, driver (75kg), full-filled fuel tank, full-filled radiator, and all fluids (including the hydraulic oil, drive oil, engine oil, and engine coolant) added to the set level stipulated by manufacturer.

Bucket capacity: 2.7-4.5m³

Engine

Description

Weichai power low-rpm engine, China II emission high torque at low rpm, more powerful, lower fuel consumption.

Standard 93 dust rate, enabling the four matching parts to drop their rate of early wear by 90% or higher ;

Intake heater grille effectively solve the difficulty to start up at low temperature.

Hyperboloid fan makes the heat dissipation more effective and the noise lower.

Emission grade	Tier 2
Manufacturer	Weichai
Model	WD10G220E23
Total power of engine (SAE J1995 / ISO 14396)	162kW(220hp) @2000rpm
Max. torque	890 N·m
Displacement	9.726L
Number of cylinders	6
Intake type	Turbocharger

Optional



8. Wheel Loader Product Series Wheel Loader 5 ton



Wheel Loader 5 ton JGM757KV



5 Big
upgrades

35
Improvements

The 757KV is an upgrade heavy-duty loader with 5 big upgrades and 35 improvements based on the classic model 757KN, which is equipped with spacious and comfortable new cab, machine covering parts and configuration design upgrade. It is a brand new product with beautiful and practicality, optimization and improvement of each system detail.

8. Wheel Loader Product Series Wheel Loader 5.5 ton

JIN'ONG 晋工

Wheel Loader 5.5 ton JGM857K

Adopts Jingong developed brand-new cab, which is luxurious, open-view, beautiful and practical.

Luxurious: Equipped with luxurious adjustable seats, brand-new operating table and instrument, adjustable directional column and sunshade curtain, cab air conditioner outlet, Bluetooth radio, centralized control box, dry powder fire extinguisher, safety hammer, USB charging, etc.



Luxurious adjustable seats



Brand-new operating table



Adjustable directional column



Brand-new instrument



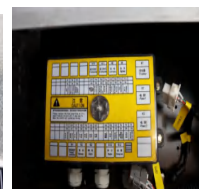
Adjustable sunshade curtain



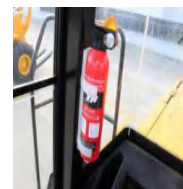
Cab air conditioner outlet



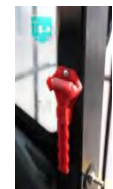
Bluetooth radio



Centralized control box



Dry powder fire extinguisher



Safety hammer

8. Wheel Loader Product Series

Wheel Loader 6 ton JGM767K



Operating weight:	21,000kg
--------------------------	-----------------

Operating weight includes the work equipment stipulated by manufacturer, the unloaded attachments, driver (75kg), full-filled fuel tank, full-filled radiator, and all fluids (including the hydraulic oil, drive oil, engine oil, and engine coolant) added to the set level stipulated by manufacturer.

Bucket capacity:	3.5-5.5m³
-------------------------	-----------------------------

Optional



8. Wheel Loader Product Series

JINLONG 晋工

Wheel Loader 6 ton JGM767KV



JINLONG 晋工
取胜源于可靠
WIN WITH RELIABILITY

JGM767KV

福建晋工机械有限公司

轮式装载机
Wheel Loader

5 Big
upgrades

35
Improvements

The 767KV is an upgrade heavy-duty loader with 5 big upgrades and 35 improvements based on the classic model 767KN, which is equipped with spacious and comfortable new cab, machine covering parts and configuration design upgrade. It is a brand new product with beautiful and practicality, optimization and improvement of each system detail.

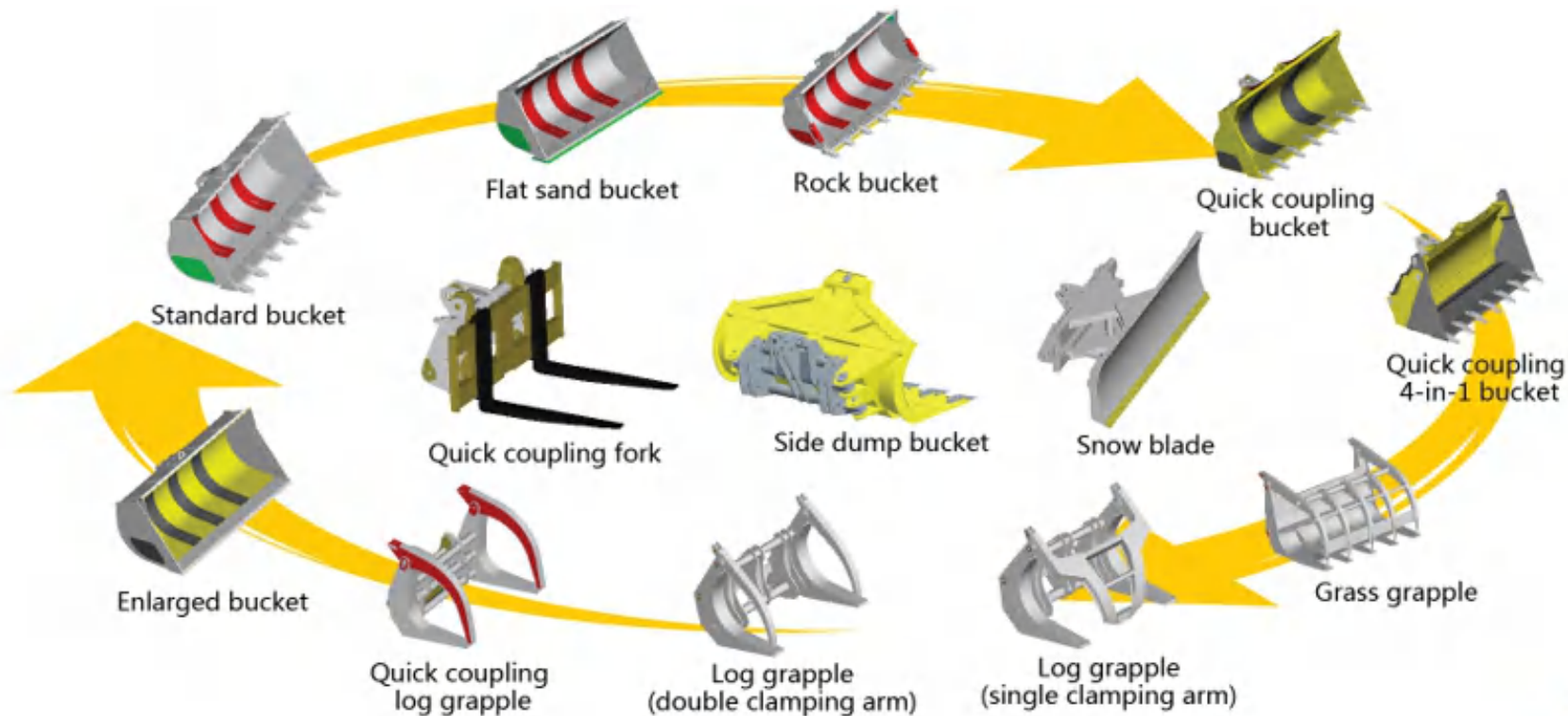
8. Wheel Loader Product Series

JIN[△]ONG 晋工

Wheel Loader 8 ton JGM787



8. Wheel Loader Product Series-Attachment



8. Wheel Loader Product Series Backhoe Loader JGM665

JIN'ONG 晋工

With a combination of digging and loading functions, it features high efficiency and fast return on investment. With hydraulic power take-off, it can be equipped with a variety of auxiliaries for various operations. The cab features wide vision, greatly improving the working efficiency.

- Small turning radius, flexible steering, quick response.
- The easy—to—control digging arm locking mechanism and the special design that the digging device is placed over center point makes the machine more safer to transport and more balanced to drive.
- The large colored glass, small cabin noise, independent heat & A/C system and large cabin space brings the driver much comfort.
- The special optional working device like breaking hammer can make the machine multi—functional.
- The four—gear synchronized electro—hydraulic gear shifting transmission box which is specially designed for backhoe loader can quickly shift the gear according to condition of road surface.
- The hydraulic multi-disc wet type brake is safe and reliable with long service life.

Configurations

- ★ Engine: Weichai
- ★ Transmission: CARRARO
- ★ Driving axles: CARRARO

Optional



Operating weight	8200KG
Bucket capacity	1.0m ³ 0.3m ³
Rated power	70kw

JinGong's skid-steer loader is suitable for infrastructure construction, industrial applications, terminal loading and unloading, urban streets, houses, barns, barns, airport runways, etc., and can also be used as auxiliary equipment for large-scale construction machinery.

- Compact structure, maneuverable movement suitable for narrow Space operation
- Open cabin with mechanical control system
- Double accelerograph contro
- Multi-function with a wide range of attachments
- Hydraulic brake



9. Excavator Product Series

JINLONG 晋工

Wheel excavator

Series: 7-1 5Ton



15 Ton



12 Ton



10 Ton



8 Ton



7 Ton

9. Wheel Excavator Product Series

JINLONG 晋工

Wheel excavator

Mainly developed differentiated product

Series: 6-1 5Ton



7 Ton



8 Ton



10 Ton



12 Ton

Multifunctional equipments



Various buckets



Cane-wood picking-up
and loading machine



Breaking hammer



Grab bucket



Striped stone clip



Twist drill



Lotus claw

9. Wheel Excavator Product Series

JIN'ONG 晋工

Wheel excavator

7 Ton



Engine		
Engine manufacturer :	Weichai	Yuchai
Power :	55.1kW (75 HP) / 2,300r/min	48 kW (65.3 HP) / 2,200r/min
Emission standard:	The 3rd emission standard of China	The 3rd emission standard of China
Displacement:	2.289L	2.982L



9. Wheel Excavator Product Series

JIN-ONG 晋工

Wheel excavator

8 Ton



Engine

Engine manufacturer :	Yuchai
Power :	48 kW (65.3 HP) / 2,200r/min
Emission standard:	The 3rd emission standard of China
Displacement:	2.982L



9. Wheel Excavator Product Series

JINJONG 晋工

Wheel excavator

9 Ton

JG9095LNZ-9

玉柴国III电喷增压发动机
柱塞泵
加长型大小臂
支撑腿

YUCHAI Tier-III electronic fuel injection turbocharged engine
Plunger pump
Lengthened big and small arms
Supporting leg



主要参数 Main Specifications

项目 Description	技术参数 Main Parameter	单位 Unit
整机重量 Operating Weight	8000	kg
抓口宽度 Grip width	1330	mm
最大抓起质量 Max. Lifting WT	1100	kg
总长度(运输状态) Overall Length(In Transportation)	7300	mm
轮胎宽度 Width Of Tyre	2200	mm
驾驶室高度 Height Of Driver's Cabin Top	2910	mm
发动机额定功率/转速 Engine Power	62.5/2200	kW/r/min
发动机排量 Engine Displacement	3.621	L
发动机最大扭矩 Max. Engine Torque	340	N·m
行驶速度 Travel Speed	0-30	km/h
爬坡能力 Climbing Ability	30	°
回转速度 Swing Speed	11	rpm
最小离地间隙 Min. Ground Clearance	340	mm
尾部回转半径 Tail End Swing Radius	2040	mm
轴距 Wheelbase	2380	mm
轮距 Tread	1670	mm
最大举升高度 Maximum elevation	8360	mm
最大吊装深度 Maximum hoisting depth	4815	mm
最大吊装半径 Maximum hoisting radius	8050	mm
最大卸载高度 Maximum unloading height	5620	mm
最大地面吊装距离 Maximum ground hoisting distance	7540	mm
最大推土深度 Max. soil depth	220	mm
最大推土高度 Max. soil height	560	mm
动臂长度 Boom Length	4000	mm
斗杆长度 Bucket Rod Length	2400	mm
推土铲宽度 Blade Width	2200	mm
轮胎规格 Tire Specifications	8.25-16	—
燃油箱容量 Fuel Tank Capacity	140	L
液压油箱容量 Hydraulic Oil Tank Capacity	140	L

9. Wheel Excavator Product Series

JIN-ONG 晋工

Wheel excavator

10 Ton



Engine	
Engine manufacturer :	Yuchai
Power :	62.5 kW (83.75 HP) / 2,200r/min
Emission standard:	The 3rd emission standard of China
Displacement:	2.982L



9. Wheel Excavator Product Series

JIN'ONG 晋工

Wheel excavator

12 Ton



Engine

Engine manufacturer :	Yuchai
Power :	62.5 kW (83.75 HP) / 2,200r/min
Emission standard:	The 3rd emission standard of China
Displacement:	2.982L



Crawler excavator

Mini CrawlerExcavator 1.8-3 ton

Small CrawlerExcavator 6-15 ton

Midium CrawlerExcavator 22-34 ton

Large CrawlerExcavator 38-75 ton

Long Reach Crawler Excavator

Customized Specifiations and special attachments

9. Excavator Product Series

JINLONG 晋工

Crawler excavator

Series: 1.8-50Ton



50 Ton



40 Ton



38 Ton



34 Ton



30 Ton



22 Ton



15 Ton



6 Ton



75 Ton

Mini-excavator

Elves in cities and towns / garden expert



JGM9018-2

1.8 Ton Mini
Crawler Excavator



JGM9022-2

2.2 Ton Mini
Crawler Excavator



JGM9030-2

3 Ton Mini
Crawler Excavator



Configurations:

Engine: Yanmar

Main pump: Rexroth

Main valve: Parker

Travel motor: Doosan

Swing motor: Doosan

Specifications

Operating weight	5.95T
Bucket capacity	0.21m ³
Rated power	35.5kw/2200rpm



Configurations

- ★ Engine: Cummins
- ★ Main pump: Kawasaki
- ★ Main valve: Kawasaki
- ★ Travel motor: Doosan
- ★ Swing motor: Doosan

Specifications

Operating Weight	14.8 Ton
Bucket capacity	0.55m ³
Engine brand	Cummins
Engine model	4BTAA3.9-C125
Rated power	93kw



Configurations

- ★ Engine: Cummins
- ★ Main pump: Kawasaki
- ★ Main valve: Kawasaki
- ★ Travel motor: Doosan
- ★ Swing motor: Doosan

Specifications

Operating Weight	22.3Ton
Bucket capacity	1.2m ³
Engine brand	Cummins
Engine model	6BTA5.9-C180-II
Rated power	132kw



Configurations

- ★ Engine: Cummins
- ★ Main pump: Kawasaki
- ★ Main valve: Kawasaki
- ★ Travel motor: Doosan
- ★ Swing motor: Doosan

Specifications

Operating weight	29.5Ton
Bucket capacity	1.4m ³
Rated power	160kw
Engine brand	Cummins
Engine model	6CTA8.3-C215-II

Configurations

- ★ Engine: Cummins
- ★ Main pump: Kawasaki
- ★ Main valve: Kawasaki
- ★ Travel motor: Doosan
- ★ Swing motor: Doosan

Specifications

Operating weight	32Ton
Bucket capacity	1.5m ³
Rated power	194kw
Engine brand	Cummins
Engine model	6CTA8.3-C260-II





Configurations

- ★ Engine: Cummins
- ★ Main pump: Kawasaki
- ★ Main valve: Kawasaki
- ★ Travel motor: Doosan
- ★ Swing motor: Doosan

Specifications

Operating weight	35.6Ton
Bucket capacity	1.8m ³
Rated power	209kw
Engine brand	Cummins
Engine model	6LTAA8.9-C280-II



Configurations

- ★ Engine: Cummins
- ★ Main pump: Kawasaki
- ★ Main valve: Kawasaki
- ★ Travel motor: Doosan
- ★ Swing motor: Doosan

Specifications

Operating weight	38Ton
Bucket capacity	1.9m ³
Rated power	223kw
Engine brand	Cummins
Engine model	6LTAA8.9-C300- II



Configurations

- ★ Engine: Cummins
- ★ Main pump: Kawasaki
- ★ Main valve: Kawasaki
- ★ Travel motor: Doosan
- ★ Swing motor: Doosan

Specifications

Operating weight	50.5Ton
Bucket capacity	2.4m ³
Rated power	261kw
Engine brand	Cummins
Engine model	M11--C350



Configurations

- ★ Engine: Cummins
- ★ Main pump: Kawasaki
- ★ Main valve: Kawasaki
- ★ Travel motor: Doosan
- ★ Swing motor: Doosan

Specifications

Operating weight	75Ton
Bucket capacity	4.0-5.0m ³
Rated power	336kw
Engine brand	Cummins
Engine model	QSX15

10. Crawler Excavator Product -Customized Specifications and special attachments



11. Introduction of Road Machinery

1、 Road Machinery



Vibratory Roller



Motor Grader



Dozer

2、Motor grader (JGM3165/JGM3180/JGM3200/JGM3220)

Grader of this type covers a wide range of use, including the land leveling, trenching, scratching the slope, moving earth, loosening earth, snow removing and other operations on considerably enormous floor areas such as highways, airports and farmlands.



3、Bulldozer(JGM4161/JGM4221/JGM4321)

- Bulldozer is a equipment for multi purposes, such as shoveling and moving soil, sandstone, etc. It is widely applicable to various earth engineering operations: bulldozing, leveling, shoveling and pulling in ore yard, infrastructure, road construction, port, etc.



4、 SINGLE-DRUM VIBRATORY ROLLER-JGM614MH/JGM618MH/JGM622MH/JGM626MH

Excellent Performance

- ◇ "Equipped with the 6-cylinder diesel engine, enjoying a stable and reliable performance.
- ◇ Most of the mass distributed on the front drum, i.e. more than 50% of the total weight, producing large exciting force, high amplitude and proper compacting performance as a result.
- ◇ Equipped with the SKF, FAG or TIMKEN special vibratory bearing of well-known international brand.
- ◇ Streamline engine hood can be fully opened, making the repair and maintenance convenient.
- ◇ The spacious, comfortable, low-noise cab features thermal insulation, vibration reduction and provides unobstructed visibility.
- ◇ Air-conditioner is optional for customers' various needs."



5、HYDRAULIC VIBRATORY ROLLER-JGM610H/JGM612H/JGM614H/JGM618H/JGM620H/JGM622H/JGM626H

Excellent Performance

◇"Equipped with the closed hydraulic driving system consisting of plunger pump and plunger motor from REXROTH or SAUER, enjoying high working pressure and long service life.

◇Applying the front and rear wheels dual-drive mode, thus providing proper driving performance.

◇Most of mass distributed on the vibrating drum i.e. more than 56% of the total weight, producing large exciting force, proper compacting performance and high working efficiency as a result.

◇The spacious and quiet cab provides excellent all-around visibility and features thermal insulation, vibration reduction.

◇The machine is also equipped with an optional air conditioner and an optional compactibility measuring instrument, according to users' requirement. "



12. Introduction of Meterail Machine Forklift Truck JGM5050/5070/5100/5120 JINJONG 晋工

- **Optional allocation** of a variety of high-quality power, equipped with engine electronic control technology, can protect the engine in many ways, to ensure the safe operation of the engine
- **Load sensing** and dual pump hydraulic system technology are adopted to improve the operation efficiency and reduce the overall energy consumption
- The super large capacity aluminum tube belt radiator and optimized heat dissipation channel further improve the heat dissipation capacity of the vehicle.

High security

- Equipped with wide-field portal frame system and wide-angle rearview mirror, to provide a good working field of vision for drivers

High comfort

- Standard diameter 300mm steering wheel, assist system, lightness control, reduce driver fatigue;
- It adopts optimized cover system and hood locking mechanism. The hood is flexible and convenient to maintain.

Rich options

ISUZU engine, high exhaust device, air prefilter, fireproof cap, solid tire, two stage free lift mast, three stage free lift mast , widening fork frame, fork sleeve, side shifter, paper roll clamp, bale clamp, carton clamp, block clamp, rotators, drum clamp, push-pull, etc.





Jingong's first-generation 5.5-ton electric loader, with a battery of 210KWh.



Jingong's second-generation 5.5-ton electric loader,
The battery uses a configuration of 351KWh,
At the same time, the shortcomings of the first-generation products are optimized.

13.Pure Electric Product Series

Lithium Battery Wheel Loader 5.5 ton JGM857E

JINZONG 晋工



Operating Weight: 18.3 ton

Rated Load: 5.5 ton

Charing time: one hour

Endurance time:

General Working condition 7.5-8.5 h

Heavy duty working condition 6.5-7.5 h

Multiple working conditions application scenarios:

JGM857E can be skillfully used in earthwork, iron and steel plant, cement mixing plant, gravel yard, mine tunnel and other severe conditions.

Test situation:



Test usage in a battlefield in Fujian::



Usage in a mine:



Usage in a tunnel:



Usage in a mixing



Usage in a gravel





Cost saving

Pure Electric Wheel Loader : USD55/day (electricity) × 365 days = USD 20075

Diesel Wheel Loader: USD 243/day (fuel) × 365 days = USD 88695

Cost saving USD 68620 per year

USD 68620 × 3 years = USD 205860



carbon emission

Diesel Wheel Loader: fuel consumption $17 \text{ L/hour} \times 14 \text{ (hour)} = 238 \text{ L/day}$

1 L diesel = 2.63 kg CO2 emission $238 \text{ (L/day)} \times 2.63 \text{ CO}_2 = 625.94 \text{ kg (CO}_2\text{/day)}$

Working day: 300 days $300 \times 626 = 187800 \text{ kg (CO}_2\text{ emission/kg)}$

Pure Electric Wheel Loader: zero emission

Carbon emission saving 187.8 ton/year

5 years Carbon emission saving $187.8 \times 5 = 939 \text{ ton}$



Operating Weight: 8050kg

Lithium battery: 140Kwh

Bucket capacity: 0.3m³

Charing time: 60 minutes

Endurance time: ≥10 h



Operating Weight: 33000kg

Lithium battery: 422Kwh

Centrifugal Force: 590/450kN

Vibration Frequency: 0~28/33Hz

Charing time: 90 minutes

Endurance time: 5-7 h

13. Pure Electric Product Series 17m Lithium Battery Tracked Self-propelled Spider Lifts JGMZZJGK17EV **JINLONG 晋工**



Operating Weight: 4100kg

Charing time: 60 minutes

Max. lift height: 17m

Endurance time: ≥ 12 h

13. Pure Electric Product Series Lithium Battery Truck Type Hybrid Insulated **JINLONG** 晋工
Bucket Arm Truck JGM5140JGK23EV



Operating Weight: 14000kg

Max. lift height: 23m

Charing time: ≤ 60 minutes

Endurance time: ≥ 12 h

14. Sales and Service Network

Intelligent system



“Jingong Vehicle Steward”

Intelligent APP



14. Sales and Service Network

JIN[△]ONG 晋工

Domestic marketing network



Products of Fujian Jingong Machinery Co., Ltd. cover more than 30 provinces, cities and autonomous regions in China, and have more than 100 first-level agents.

14. Sales and Service Network

International sales network



International sales network -
Products are sold to more
than 30 countries and regions
such as southeast Asia,
Middle East, central Asia,
Africa, Latin America and so
on.

14. Sales and Service Network

JINLONG 晋工

1. Service network

★ Jingong's accessories center

Sufficient spare parts can meet the service needs of users.



2. Service styles

- 1) On time and fast
- 2) Highest efficiency
- 3) Service adventure



Thanks!

I wish you good health and good luck in everything!

For more details, please visit the official website of Fujian Jingong Machinery Co., Ltd.

Website: www.jingongglobal.com